

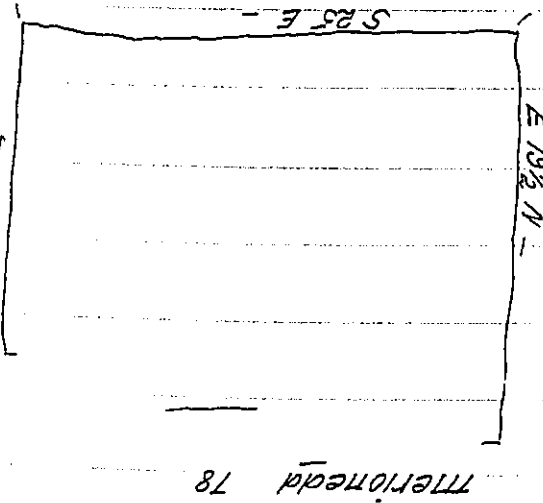
By going Backward on the
head Line S 25 e 12 thick Sap
S 2 1/2 e 14 Old whit. O.
S 25 e 58 To a wh. O. 2 p. east
S 37 e 14

Evatt Harrys land beginning at a post
at the Corner of John Harolds land
then by Ed. Reeves land
S 2 3/2 e 14 3/4 to a heap of Stones
by W^m Garton
W 6 1/2 N 5 1/2 Correct by 9 3/4 North w.
S 2 W 1 1/2 N 8 5/2 to a Sp. O.
W 2 2 1/2 N 3 3/4 S. O.
W 2 S 4 1/2 - W O
W 2 4 N 4 3/4 W O
W 13 1/2 N 2 1 3/4 to a B O

Ditto to Stat. arbor Lines 4 p No.

W 14 1/2 N 2 1 3/4 Ditto 23 3/4 B L
W 6 N 19 1/2 B O
W 8 N 41 W. O.
W 12 N 7 1/2 Chestnut
W 10 N - 16 B O
Cor W 1 1/2 N 22 ~~22~~ 18 stake 22 let it be
N 23 W (17 to a Road) 93
E 4 S 324

from the last Corner 148 p to a Road at 200 p
another Road at 220 the line leaves the
Road out of the Tract



IN TESTIMONY that the above is a copy of the original remaining on file in
the Department of Internal Affairs of Pennsylvania, made
conformably to an Act of Assembly approved the 16th day of
February, 1833, I have hereunto set my Hand and caused
the Seal of said Department to be affixed at Harrisburg,
this Eighteenth day of March 1910

Henry Houck
Secretary of Internal Affairs.